

Cree Square LED Series

MINI

Product Description

Conceived with an essential design, this luminaire has a simple square shape which practically integrates in all environments; also its square profile with rounded edges reduces wind exposure. Cree Square LED Series is conceived with a die-cast aluminium housing, with a powder finish after treatment of the surfaces which protects the fixture from corrosion, fading and peeling. It is equipped with a closing plate that mounts a stand alone light-engine, all powered by Cree technology and featuring the NanoOptic® Precision Delivery Grid™ optic system. With many available optics and an extensive range of mounting brackets, Cree LED Square Series enhance interchangeable configurations. The possible applications are endless: street lighting and urban decoration, general area lighting and parking lots, spotlight for monuments and facades.

Performance Summary

NanoOptic® Precision Delivery Grid™ optic

CRI: Minimum 70 CRI

CCT: 3000K or 4000K or 5700K

Limited Warranty*: 5 years on luminaire



Ordering Information

Fully assembled luminaire is composed of two components that must be ordered separately.

Example: **Luminaire:** SMI-A-2LG-A-30K-+24-BK-FA-S-01 + **Mount:** SMI-SQBK

Luminaire (mount must be ordered separately)																				
SMI	-	A	-	2LG	-	A	-	30K	-	+	-	24	-	WH	-	FA	-	S	-	01
Product		Version		Optic		Input Power Designator		CCT		Insulation Class		Voltage		Color		Options		Variant		Cable length
SMI	-	A	-	2LG Type II long 275 Type II short 0.75 210 Type II short 1,0 2SH Type II short 3SH Type III short 4ME Type IV medium 5ME Type V Medium 5SH Type V Short	-	A 45W	-	30K 3000K 40K 4000K 57K 5700K	-	+	-	24 220-240V	-	WH White BK Black SV Silver BZ Bronze	-	FA Field Adjustable Output VM Virtual Midnight*	-	S	-	01 Exit cable 50cm (w/connector)

Mount (luminaire must be ordered separately)	
SMI-WM	Wall mount
SMI-SQ*	Side arm - square section
SMI-SC1*	Side arm - round section Ø102mm
SMI-SC2*	Side arm - round section Ø120mm
SMI-ADJ*	Adjustable arm (OD 60mm)
SMI-YM*	Yoke mount

* Color options are: WH White BK Black SV Silver BZ Bronze

† See www.cree.com/lighting/products/warranty for warranty terms



www.cree-europe.com

Ph. +39 055 343081 Fax +39 055 34308200

Rev. Date: 23 May 2017



Product Specifications

CONSTRUCTION & MATERIALS

- Die cast aluminum housing
- 50cm cable with quick connector factory supplied
- Multiple mounting systems
- Available colors: Black, White, Silver, Bronze
- High resistance powder coating with increased anti-ageing and anti-corrosion performance
- Weight: 5kg

ELECTRICAL SYSTEM

- **Input Voltage:** 220-240V or 50/60Hz
- **Power Factor:** > 0.95 at full load
- **Total Harmonic Distortion:** < 20% at full load
- Field Adjustable Output option
- Stand-alone Virtual Midnight field programmable option
- 6 kV surge protection per EN 61000-4-5

REGULATORY & VOLUNTARY QUALIFICATIONS

- CE listed
- Risk group exempt in accordance with Standard EN 62471 for photobiological safety
- Enclosure rated IP65 per IEC 60529
- Degree of protection IK08
- RoHS compliant

Electrical Data*		
Input Power Designator	System Watts 220-240V	Total Current
		230V
A	45	0.20

* Electrical data at 25°C (77°F)

Control Options Setting**

Virtual Midnight		
Description		
38W - Virtual Midnight 24:00-06:00		38/27W
43W - Virtual Midnight 24:00-06:00		43/30W
45W - Virtual Midnight 24:00-06:00		45/32W
27W - Virtual Midnight 24:00-06:00		27/19W
29W - Virtual Midnight 24:00-06:00		29/20W
34W - Virtual Midnight 24:00-06:00		34/24W
38W - Virtual Midnight 24:00-06:00		38/19W
43W - Virtual Midnight 24:00-06:00		43/22W
45W - Virtual Midnight 24:00-06:00		45/23W
Field Adjustable Output		
Description		
19W Fixed		
27W Fixed		
29W Fixed		
34W Fixed		
38W Fixed		
43W Fixed		
45W Fixed		

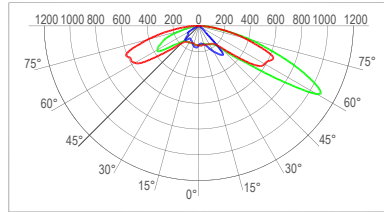
** To be specified upon item booking

Square LED Series - MINI

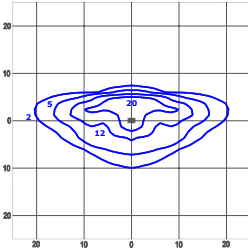
Photometry

All published luminaire photometric testing performed to IESNA LM-79-08 standards by a NVLAP certified laboratory. To obtain an IES file specific to your project consult: <http://www.cree-europe.com>.

2LG - Type II Long



cd/klm
 C0 - C180 C90 - C270 C10 - C190



lux

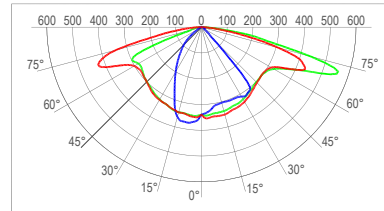
Test Report #: 192-QL17-R10

SMI-A-2LG-A-40K
 Mounting Height: 6m

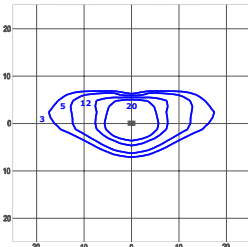
Lumen Output - 2LG (Type II Long)			
Input Power Designator	5700K	4000K	3000K
	A	5549	5443

* Initial delivered lumens at 25°C (77°F). Actual production yield may vary between -4 and +10% of initial delivered lumens

275 - Type II Short 0.75



cd/klm
 C0 - C180 C90 - C270 C07 - C187



lux

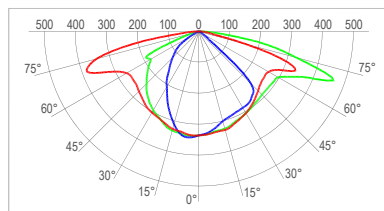
Test Report #: 192-QL17-R08

SMI-A-275-A-40K
 Mounting Height: 6m

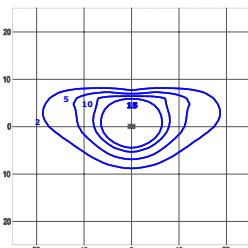
Lumen Output - 275 (Type II Short 0.75)			
Input Power Designator	5700K	4000K	3000K
	A	5681	5572

* Initial delivered lumens at 25°C (77°F). Actual production yield may vary between -4 and +10% of initial delivered lumens

210 - Type II Short 1.0



cd/klm
 C0 - C180 C90 - C270 C17 - C197



lux

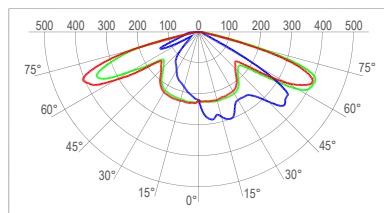
Test Report #: 192-QL17-R01

SMI-A-210-A-40K
 Mounting Height: 6m

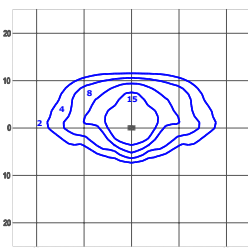
Lumen Output - 210 (Type II Short 1.0)			
Input Power Designator	5700K	4000K	3000K
	A	5803	5692

* Initial delivered lumens at 25°C (77°F). Actual production yield may vary between -4 and +10% of initial delivered lumens

2SH - Type II Short



cd/klm
 C0 - C180 C90 - C270 C02 - C182



lux

Test Report #: 192-QL17-R09

SMI-A-2SH-A-40K
 Mounting Height: 6m

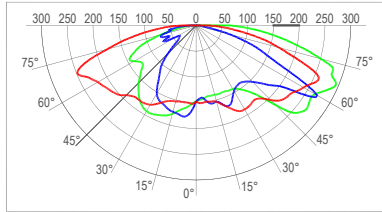
Lumen Output - 2SH (Type II Short)			
Input Power Designator	5700K	4000K	3000K
	A	5642	5534

* Initial delivered lumens at 25°C (77°F). Actual production yield may vary between -4 and +10% of initial delivered lumens

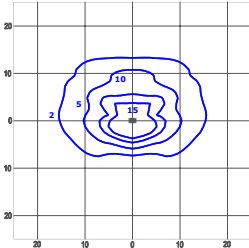
Photometry

All published luminaire photometric testing performed to IESNA LM-79-08 standards by a NVLAP certified laboratory. To obtain an IES file specific to your project consult: <http://www.cree-europe.com>.

3SH - Type III Short



cd/klm
 C0 - C180 C90 - C270 C30 - C210



lux

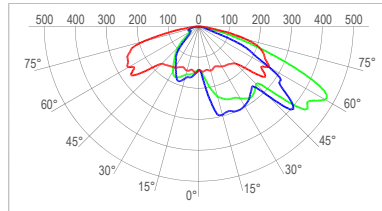
Test Report #: 192-QL17-R11

SMI-A-3SH-A-40K
 Mounting Height: 6m

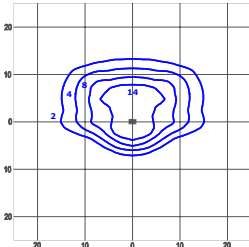
Lumen Output - 3SH (Type III Short)			
Input Power Designator	5700K	4000K	3000K
	Initial Delivered Lumens*	5277	5176

* Initial delivered lumens at 25°C (77°F). Actual production yield may vary between -4 and +10% of initial delivered lumens

3ME - Type III Medium



cd/klm
 C0 - C180 C90 - C270 C47 - C227



lux

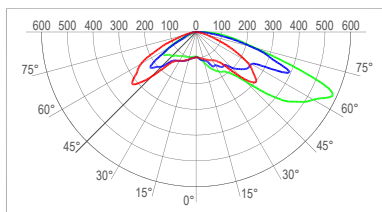
Test Report #: 192-QL17-R12

SMI-A-3ME-A-40K
 Mounting Height: 6m

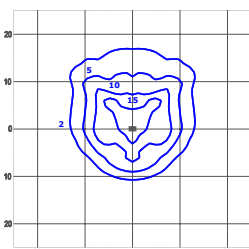
Lumen Output - 3ME (Type III Medium)			
Input Power Designator	5700K	4000K	3000K
	Initial Delivered Lumens*	5566	5459

* Initial delivered lumens at 25°C (77°F). Actual production yield may vary between -4 and +10% of initial delivered lumens

4ME - Type IV Medium



cd/klm
 C0 - C180 C90 - C270 C45 - C225



lux

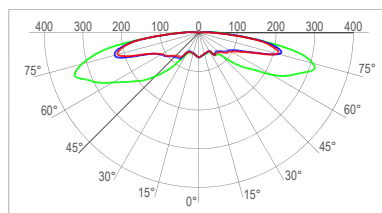
Test Report #: 192-QL17-R13

SMI-A-4ME-A-40K
 Mounting Height: 6m

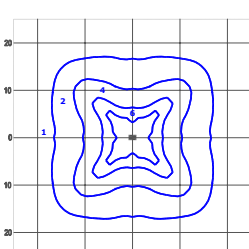
Lumen Output - 4ME (Type IV Medium)			
Input Power Designator	5700K	4000K	3000K
	Initial Delivered Lumens*	5589	5482

* Initial delivered lumens at 25°C (77°F). Actual production yield may vary between -4 and +10% of initial delivered lumens

5ME - Type V Medium



cd/klm
 C0 - C180 C90 - C270 C45 - C225



lux

Test Report #: 192-QL17-R14

SMI-A-5ME-A-40K
 Mounting Height: 6m

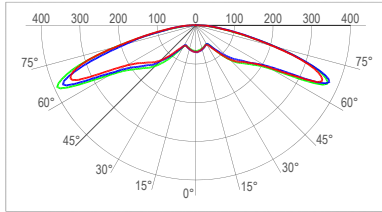
Lumen Output - 5ME (Type V Medium)			
Input Power Designator	5700K	4000K	3000K
	Initial Delivered Lumens*	4942	4710

* Initial delivered lumens at 25°C (77°F). Actual production yield may vary between -4 and +10% of initial delivered lumens

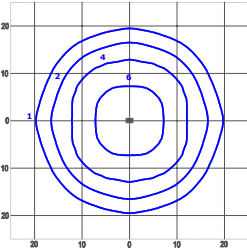
Photometry

All published luminaire photometric testing performed to IESNA LM-79-08 standards by a NVLAP certified laboratory. To obtain an IES file specific to your project consult: <http://www.cree-europe.com>.

5SH - Type V Medium



cd/klm
 C0 - C180 C90 - C270 C50 - C230



lux

Test Report #: 192-QL17-R15

SMI-A-5SH-A-40K
 Mounting Height: 6m

Lumen Output - 5SH (Type V Medium)			
Input Power Designator	5700K	4000K	3000K
		Initial Delivered Lumens*	Initial Delivered Lumens*
A	5548	5288	4334

* Initial delivered lumens at 25°C (77°F). Actual production yield may vary between -4 and +10% of initial delivered lumens